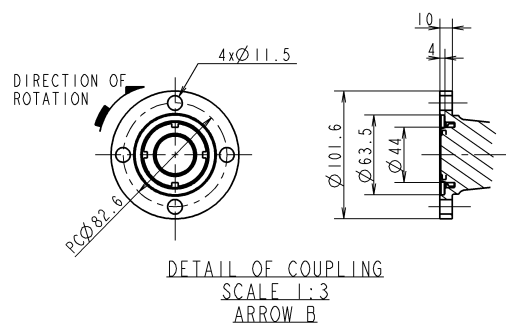
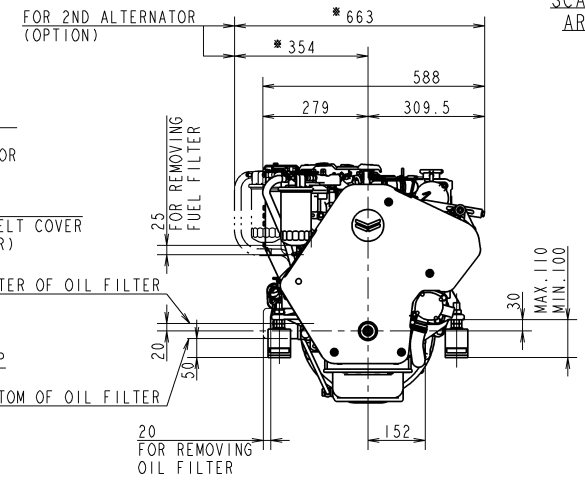
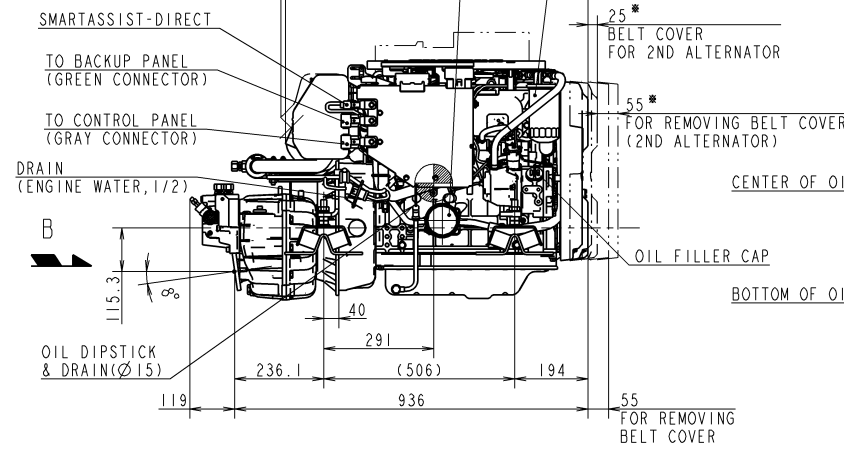
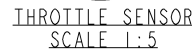
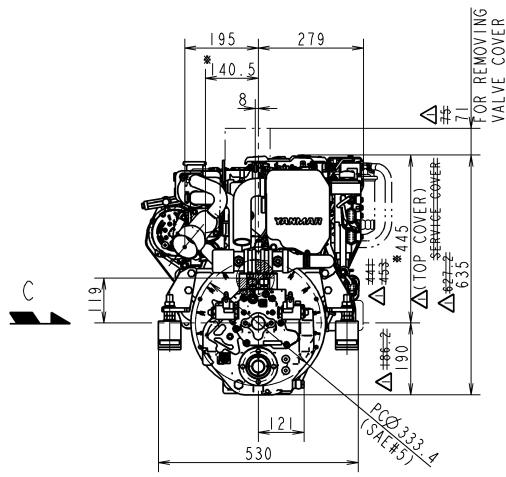
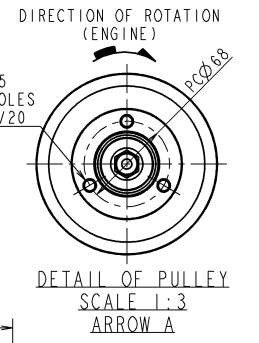
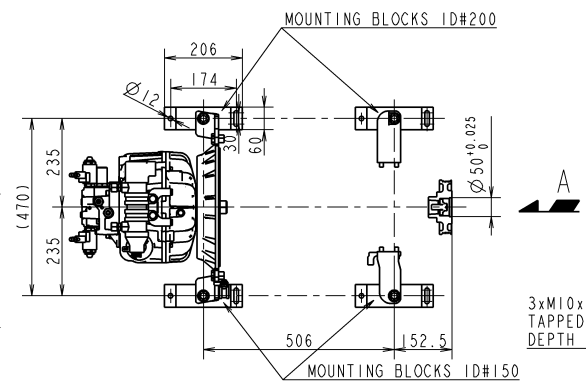
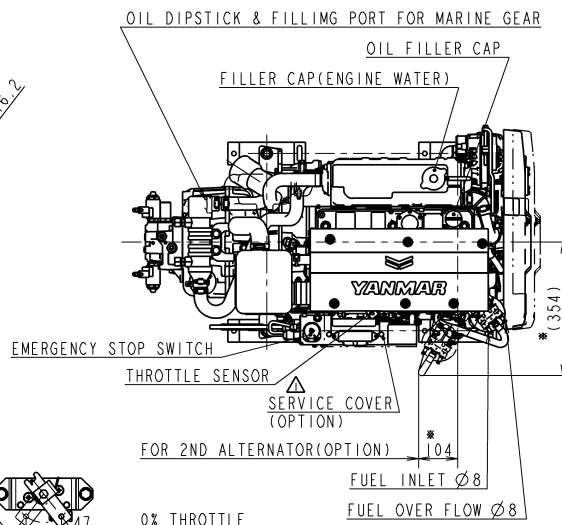
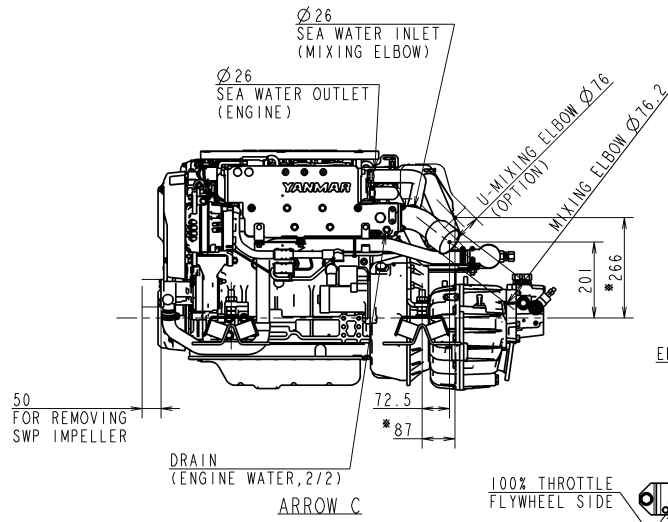


CAREER

(YDSBD-16002)  
REV.1(2018.3.20) CHANGE TOP COVER AND BELT COVER (YDSBD-18002)



NOTE  
1. MOUNTING BLOCKS ARE COMPRESSED ABOUT 4mm BY ENGINE WEIGHT.  
2. DIMENSIONS OF MOUNTING BLOCK IN THIS DRAWING ARE WITHOUT ANY DEFORMATION.  
3. THE FIGURES MARKED WITH \* SHOW THE DIMENSIONS WITH U-MIXING ELBOW OR OPTIONAL PARTS.  
4. ● SHOWS THE CENTER OF GRAVITY.

SPECIFICATIONS		
Model	4JH57	4JH45
Continuous Power (ISO 8665)	kW/min <sup>-1</sup> 38.1 / 2907 30.1 / 2907	
Fuel Stop Power	Propeller shaft (ISO 8665)	kW/min <sup>-1</sup> ---
	Crankshaft (ISO 8665)	kW/min <sup>-1</sup> 41.9 / 3000 33.1 / 3000
Reduction ratio	1.93   2.29   2.48   2.71   1.93   2.29   2.48   2.71	
Dry mass	kg Approx. 253	
Direction of rotation at output coupling (Forward)	clockwise	

SEC. MANAGER 北本		MODEL	4JH57	4JH45	SCALE	1:10
CHECKED	SPECIALIST	QTY	-	-	MATERIAL	
DESIGNED	DRAWN	DATE: Y.M.D	NAME			
K. Shiga	F. Kishida	2017.2.27	4JH57-ZF25A-E-SHIFT			
			CODE	B2-29675-0080		REV. 1
			MANAGER	1110		DRAWN SIZE