

## Nanni Diesel marine engine N4.43HD

31.6 kW (43 hp) at 2800 rpm

### Kubota engine base

This Nanni Diesel 4 cylinder marine engine which incorporates the latest Kubota innovations, is particularly well suited for displacement vessels and sailing yachts.

### Robust

Nanni Diesel has forged a strong partnership with Kubota. Kubota engines are known for their robust design and ensure great reliability and excellent longevity.

Experience and know-how of the Nanni Diesel engineers resulted in the latest marinization developments which benefit the N4.50. The heat exchanger ensures an ideal temperature management of the engine even during heavy duty operation. Reliability and low maintenance cost are warranted by the timing gear and other solid designs of the robust Kubota engine base.

### E-TVCS Combustion System

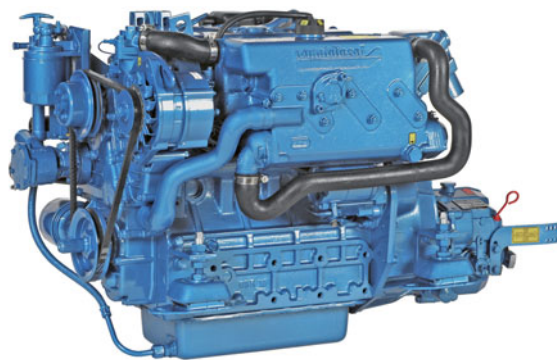
The N4.50 is equipped with the E-TVCS combustion and injection system which considerably reduces particulate emission and smoke while dramatically improving fuel efficiency.

### Comfort of use

Its low rated speed of 2800 rpm coupled with powerful cylinder capacity gives the N4.50 ample power for all navigation conditions.

A special coating of the pistons with molybdenum lowers friction and reduces engine vibrations resulting in supplementary comfort concerning the sound levels.

The large choice of straight or angle down gearboxes, either mechanical or hydraulic, as well as a Sail Drive transmission allows you to fully utilize the significant torque of this engine by perfectly adapting it to your specific vessel.



### Main characteristics

- Kubota base engine
- Optimized cooling system
- E-TVCS combustion system
- Low rpm
- Big displacement

### Available transmissions

- TMC60 (mechanical)
- TMC260 (mechanical)
- TTMC35A (mechanical) 7° angle
- TTMC35P (mechanical)
- ZF15MIV (mechanical) 15° angle
- ZF25M (mechanical)
- ZF25 (hydraulic)
- ZF25A (hydraulic) 8° angle
- TM345H (hydraulic)
- TM345A (hydraulic) 8° angle

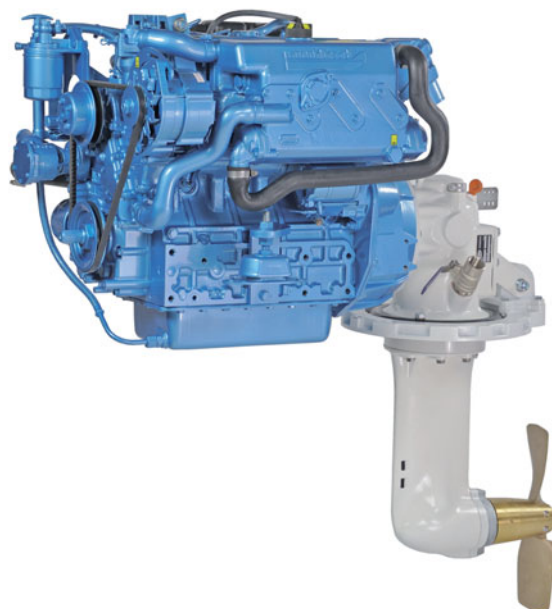
### Applications

- Sailing boat
- Displacement hulls
- Semi-planning hulls

### Technical specifications

Engine base	Kubota
Rated power (kW/hp)*	31.6 / 43
Rated rpm (rpm)*	2800
Displacement (cm <sup>3</sup> /in <sup>3</sup> )	2197 / 137.07
Number of cylinders	4 in line
Bore and stroke (mm/in)	87 x 92.4 / 3.42 x 3.63
Compression ratio	23:1
Combustion system	Indirect (E-TVCS)
Intake	Naturally aspirated
Cooling	Closed cooling with heat exchanger
El. equipment / Alternator	12V / 100A
Instrument panel	C4
Transmission	Mechanical or hydraulic gearbox Sail Drive SP60 ratio. 2.15:1
Engine Max Install. Angle	15° (dynamic)
Certifications	EPA, EU-RCD, BSO, SAV, SOLAS
Dry weight with TMC60 (kg/lb)	235 / 518
Dry weight with Sail Drive (kg/lb)	258 / 569
<b>Connections diameter</b>	
Exhaust (mm/in)	60 / 2.36
Fuel (mm/in)	8 / 0.31
Sea Water (mm/in)	32 / 1.26

\* At engine flywheel, according to ISO 8665-1



# N4.43HD

31.6 kW (43 hp)

## Standard equipment

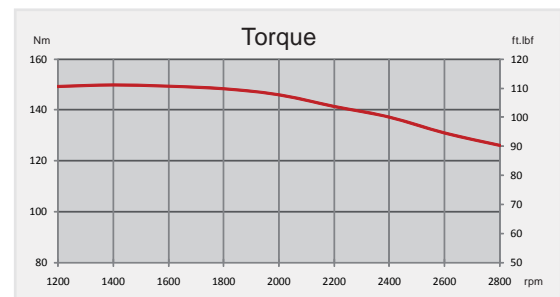
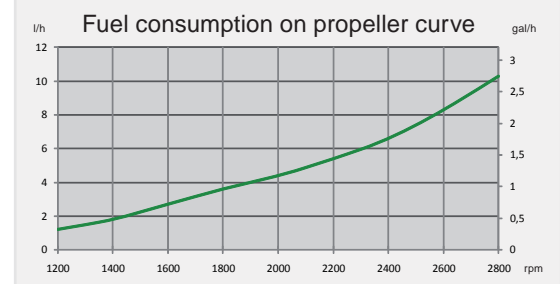
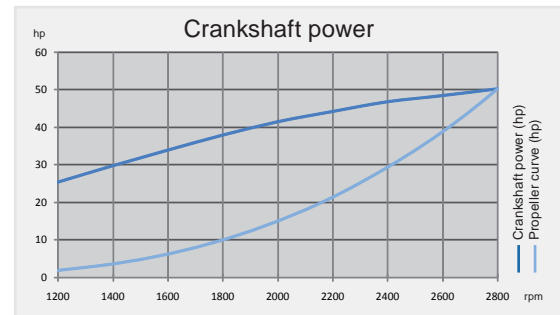
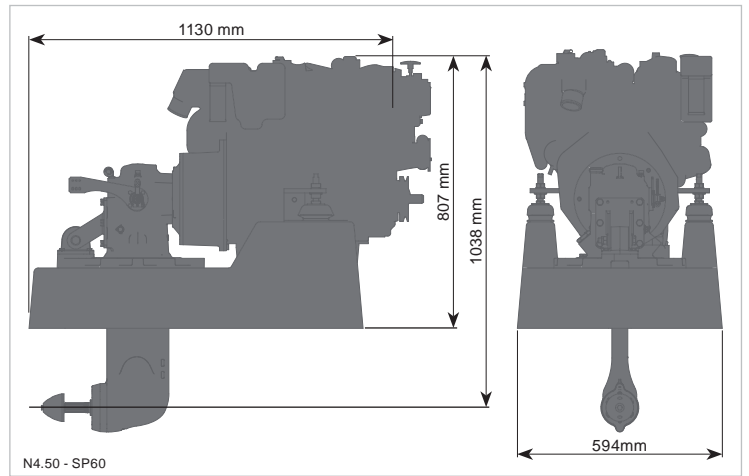
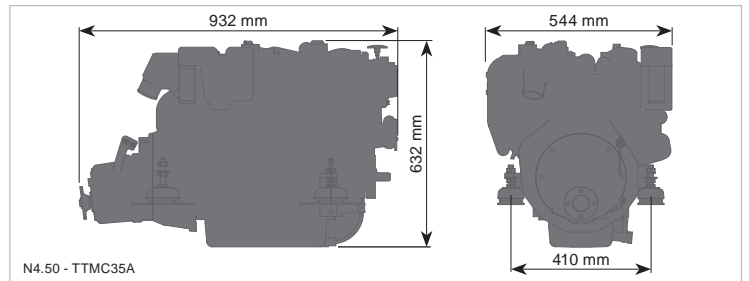
- Polyester frame (for Sail Drive version)
- Warranty certificate
- Fresh Water Cooled Exhaust Manifold
- Exhaust elbow
- Closed cooling with heat exchanger
- 4 meter electrical harness
- Fuel filter
- Oil filter
- Mechanical or hydraulic gearbox or Sail Drive
- Owner's manual
- Sea water pump
- Coolant circulating pump
- In line injection pump
- Fuel feed pump
- Oil extraction pump
- Control cables mounting points
- Electrical stop
- Flexible engine mounts
- Electrical system 12V
- C4 panel
- Thermostat

## Optional equipment

- Additional alternators
- Keel Cooling
- Two pole electrical system
- PTO Pulley
- Remote control
- Sea water hoses
- Fuel hoses
- Sea water filter
- Flexible coupling
- Exhaust system

## C4 panel

- Ignition key / Start button
- Tachometer and hour meter / Voltmeter
- Oil pressure indicator
- Coolant temperature indicator
- Battery charge warning light
- Engine oil pressure warning light
- Water in fuel filter warning light
- Coolant temperature warning light
- Preheating warning light



## Nanni Industries S.A.S. France

11, Avenue Mariotte-Zone Industrielle

33260 La Teste France

Tel : + 33 (0)5 56 22 30 60

Fax : +33 (0)5 56 22 30 79

www.nannidiesel.com

Certified ISO by



Your dealer