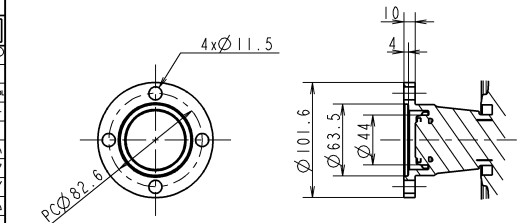
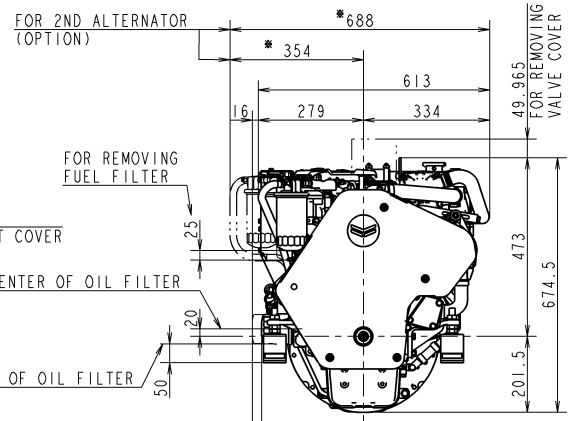
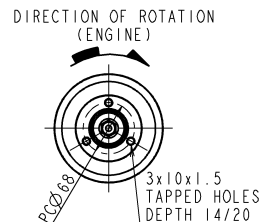
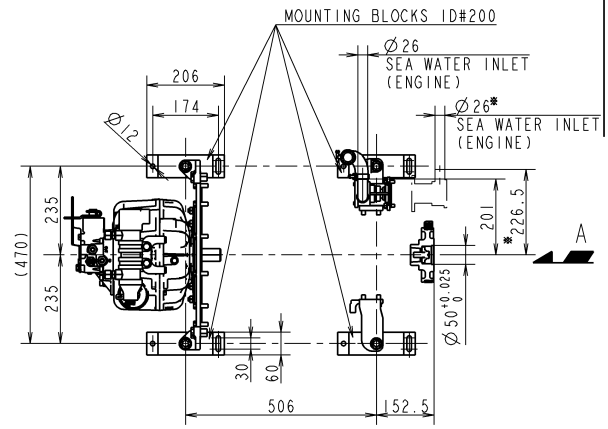
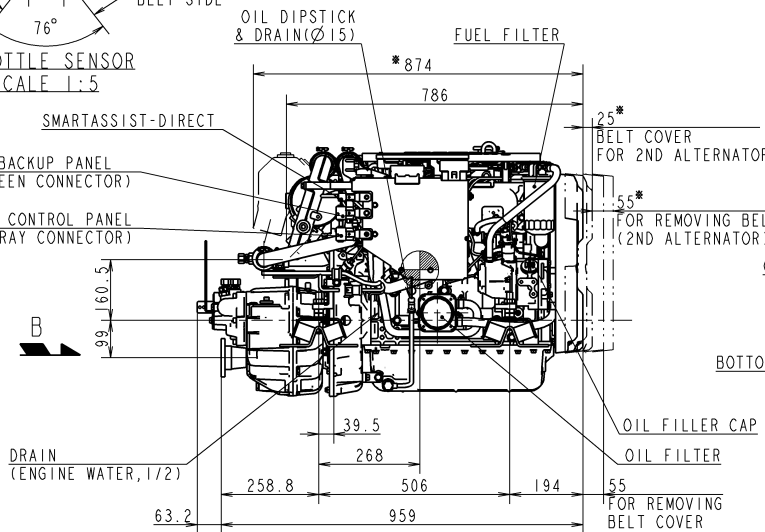
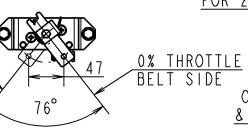
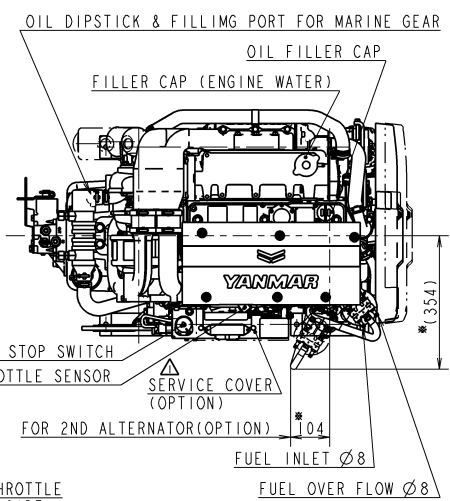
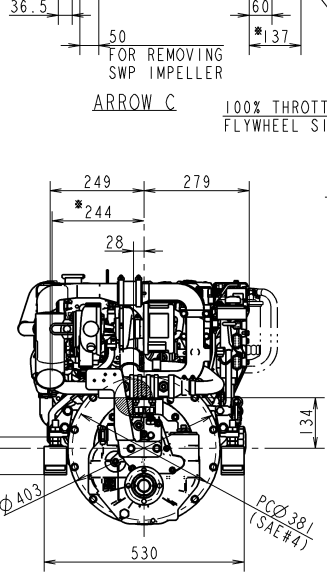
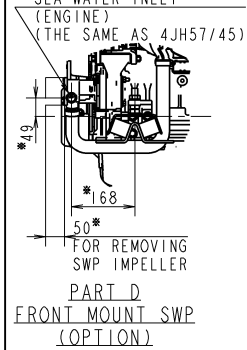
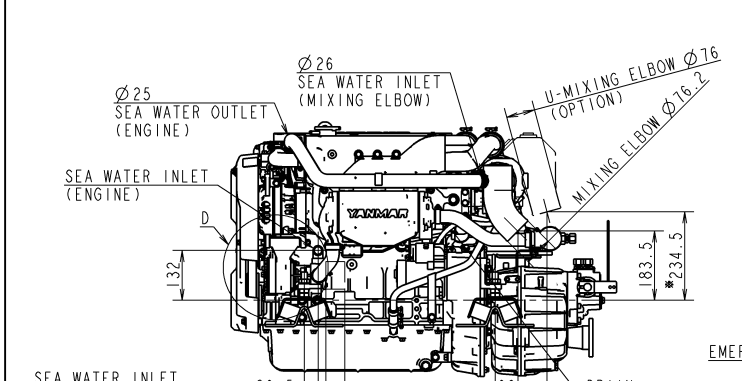


CAREER

(YDSBD-16002)  
REV.1(2018.3.20) CHANGE TOP COVER AND BELT COVER (YDSBD-18002)



DETAIL OF COUPLING SCALE 1:3 ARROW B

NOTE  
1. MOUNTING BLOCKS ARE COMPRESSED ABOUT 4mm BY ENGINE WEIGHT.  
2. DIMENSIONS OF MOUNTING BLOCK IN THIS DRAWING ARE WITHOUT ANY DEFORMATION.  
3. THE FIGURES MARKED WITH \* SHOW THE DIMENSIONS WITH U-MIXING ELBOW OR OPTIONAL PARTS.  
4. ● SHOWS THE CENTER OF GRAVITY.

SPECIFICATIONS						
Model	4JH110	4JH80				
Continuous Power (ISO 8665)	kW/min <sup>-1</sup>	73.6 / 3101	53.5 / 3101			
Fuel Stop Power	Propeller shaft (ISO 8665)	kW/min <sup>-1</sup>	---			
	Crankshaft (ISO 8665)	kW/min <sup>-1</sup>	80.9 / 3200	58.8 / 3200		
Reduction ratio	1.97	2.80	---	1.97	2.80	---
Dry mass	kg	Approx. 262				
Direction of Rotation at Output Coupling (Forward)			BOTH			

SEC. MANAGER 北本	CHECKED 北本	DESIGNED K. Shiga	DRAWN F. Kishida	DATE: Y.M.D 2017.2.27	MODEL 4JH110 4JH80	QTY -	SCALE 1:10	MANAGER 1110
MATERIAL 4JH110xZF25-M-SHIFT					SCALE 1:10			
YANMAR					MATERIAL 4JH110xZF25-M-SHIFT			
YANMAR CO., LTD. DEVELOPMENT DIV.					REV. 1			
					B2-29677-0090			